



### FEATURE

- International standard design : cable, auto-cut, dry-motor, silicon carbide mechanical seal, high grade cast iron offering highest quality and performance.
- P/U/E multiple impellers designed to handle sewage solids and/or fibrous substances.
- Superior abrasion resistant mechanical seal manufactured with silicon carbide to ensure the best seal effect.
- Oil lip seal mounted outside of seal chamber stops solids gathering around seal faces.
- Full range offering low to high head and flow capabilities, with compact and easy installation. Also, available with Guide Rail System, which allows automatic remote connection and disconnection without entering the pit.

### APPLICATIONS

- Drainage of waste water from the attenuation tank, purifying tank and sewage tank in water treatment plant.
- Drainage of waste water containing fibrous additives from leather factory, dyeing factory and food processing factory.
- Sewage management, accumulated water, septic tank, stock farm.
- Pumping sewage from hotels, restaurants, schools and public buildings.
- Sewage management, accumulated water, septic tank, stock farm.
- Pumping sewage from hotels, restaurants, schools and public buildings.

### IMPELLER TYPE

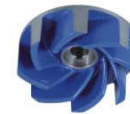
#### P Type Impeller

**Semi-open (Single Vane Impeller) :**  
Excellent to use with waste materials to prevent from clogging.



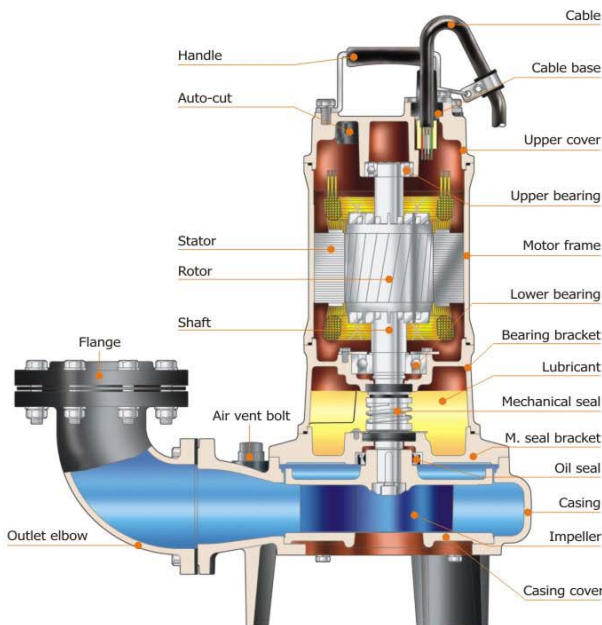
#### U Type Impeller

**Semi-open (Vortex Impeller) :**  
produces a vortex (whirlpool effect) allowing long fibrous materials and other solid waste to pass through without contact with the impeller.



#### E Type Impeller

**Enclosed Channel impeller :**  
High impeller efficiency and clog-resistant design, primarily used for large pump applications.



50AFU2.4  
50AFU2.8

80AFU21.5  
80AFU22.2

80AFP21.5  
80AFP22.2

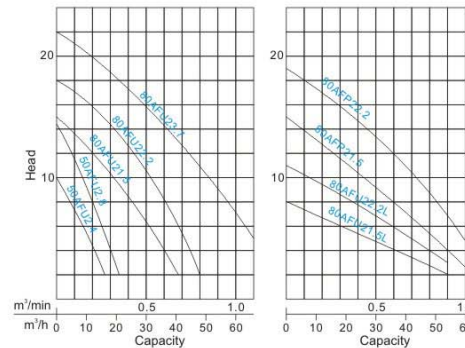
80AFU23.7



### PRODUCT NOMENCLATURE

80	AF	P	2	1.5
Discharge mm	Type	Impeller type (P/U)	Pole	kW

### PERFORMANCE CURVES



### SPECIFICATIONS

Item	Description	
Liquid temp.	0~40°C(32~104°F)	
Applications	Wastewater · Sewage	
Max depth	30m	
Pump sect.	Structure	Impeller: Semi-open · Vortex M. seal: Double M. seals Bearing: Ball type
	Material	Upper cover: FC-200
		Casing: FC-200
		Impeller: FC-200
	M. Seal: Lower: Sic/Sic · Upper: CA/CE	
Motor sect.	Motor	Dry motor 2P (3000RPM)
	Insulation	B Class (5HP-F Class)
	Frequency	50Hz
	Protector	Auto-cut
	Material	Frame
Main shaft		SUS410 (2-5HP : SUS403)
Cable	VCT or H07RN-F or SJOW/SOW	

※Pumps can be customized to fit specifications.

### PERFORMANCE SPEC.

Pole	Model	Power HP(kW)	Discharge Inch(mm)	Phase	Start Method	Head m	Capacity		Weight kg 1 / 3	Solid Passage mm	Dimension (mm)		
							m³/min	m³/h			Length	Width	Height
2P	50AFU2.4	0.5(0.4)	2"(50)	1/3	Capacitor Direct	6	0.15	9	19/18	35	236	152	418
	50AFU2.8	1(0.75)	2"(50)	1/3	Capacitor Direct	8	0.2	12	20/19	35	236	152	418
	80AFU21.5	2(1.5)	3"(80)	1/3	Capacitor Direct	8.5	0.4	24	40/36	50	379	202	575/524
	80AFU21.5L	2(1.5)	3"(80)	1/3	Capacitor Direct	4.5	0.5	30	43/39	76	402	217	626/575
	80AFU22.2	3(2.2)	3"(80)	1/3	Capacitor Direct	12.5	0.4	24	42/38	50	379	202	607/524
	80AFU22.2L	3(2.2)	3"(80)	1/3	Capacitor Direct	7	0.5	30	45/41	76	402	217	659/575
	80AFU23.7	5(3.7)	3"(80)	3	Direct	16	0.5	30	56	56	478	220	588
	80AFP21.5	2(1.5)	3"(80)	1/3	Capacitor Direct	8	0.6	36	42/38	35	413	260	576/525
	80AFP22.2	3(2.2)	3"(80)	1/3	Capacitor Direct	12	0.6	36	45/40	35	413	260	608/525

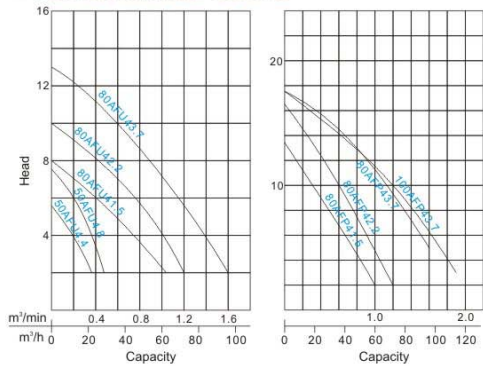
Note : Weight W/O Cable



## PRODUCT NOMENCLATURE

80 Discharge mm    AF Type    U Impeller type (P/U)    4 Pole    2.2 kW

## PERFORMANCE CURVE



## SPECIFICATIONS

Diameter (mm)	50 · 80 · 100	
Liquid temp	0~40°C(32~104°F)	
Liquid nature	Waste water and sewage	
Max depth	30m	
Pump sect.	Impeller	P type : Semi-open, Non-clog
	Mech seal	Double mechanical seal
	Bearing	Ball type
	Upper cover	FC-200
	Casing	FC-200
	Impeller	FC-200
Motor sect.	M. seal	Sic/Sic
	Motor	Dry motor
	Insulation	4P(1500RPM)
	Frequency	B Class (5HP : F Class)
	Auto-cut	50Hz
	Frame	Automatic reset motor protector
	Main shaft	FC-200
	Cable	SUS420J2 (0.5~1HP : SUS403)
	VCT	

Note : Pumps can be customized to fit specifications.

## PERFORMANCE SPEC.

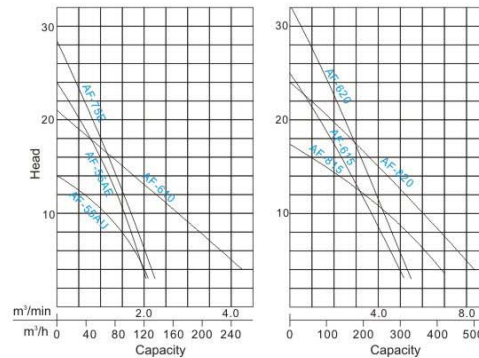
Pole	Model	Power HP(kW)	Discharge inch(mm)	Phase	Start Method	Head m	Method		Weight kg 1/3	Solid Passage mm	Dimension (mm)		
							m³/min	m³/h			Length	Width	Height
4P	50AFU4.4	0.5(0.4)	2"(50)	1	Capacitor	3.5	0.25	15	30	50	346	204	516
					Direct								
	50AFU4.8	1(0.75)	2"(50)	1	Capacitor	5	0.3	18	31	50	346	204	516
					Direct								
	80AFU41.5	2(1.5)	3"(80)	1	Capacitor	5	0.6	36	52	76	500	256	700
					Direct								
	80AFU42.2	3(2.2)	3"(80)	3	Direct	7	0.6	36	68	80	538	289	573
					Direct								
	80AFU43.7	5(3.7)	3"(80)	3	Direct	10	0.6	36	75	80	538	289	697
					Direct								
	80AFP41.5	2(1.5)	3"(80)	1	Capacitor	8	0.5	30	52	50	530	290	645
					Direct								
80AFP42.2	3(2.2)	3"(80)	3	Direct	10	0.6	36	70	50	553	313	623	
				Direct									
80AFP43.7	5(3.7)	3"(80)	3	Direct	14.5	0.6	36	79	50	553	313	643	
				Direct									
100AFP43.7	5(3.7)	4"(100)	3	Direct	11.5	1.0	60	82	50	570	313	643	
				Direct									

Note : Weight W/O Cable

## PRODUCT NOMENCLATURE

AF - 55    A    U  
Type kW    Style    Impeller type (E/U)  
AF - 6    10  
Type Discharge inch    HP

## PERFORMANCE CURVES



## PERFORMANCE SPEC.

Pole	Model	Power HP(kW)	Discharge inch(mm)	Phase	Start Method	Head m	Capacity		Weight kg 3	Solid Passage mm	Dimension (mm)		
							m³/min	m³/h			Length	Width	Height
4P	AF-55AU	7.5(5.5)	4"(100)	3	Direct	10.5	1.0	60	131	65	687	405	795
	AF-55AE	7.5(5.5)	4"(100)	3	Direct	16	1.0	60	139	40	687	405	795
	AF-75E	10(7.5)	4"(100)	3	Direct	18	1.0	60	153	40	687	405	816
	AF-610	10(7.5)	6"(150)	3	Direct	11	2.5	150	221	73	888	449	870
	AF-615	15(11)	6"(150)	3	Y-Δ	15.5	2.5	150	260	70	895	477	1026
	AF-620	20(15)	6"(150)	3	Y-Δ	20.5	2.5	150	183	70	895	477	1026
	AF-815	15(11)	8"(200)	3	Y-Δ	10	4.5	270	270	70	1045	497	1021
	AF-820	20(15)	8"(200)	3	Y-Δ	14	4.5	270	285	70	1045	501	1032

Note : Weight W/O Cable